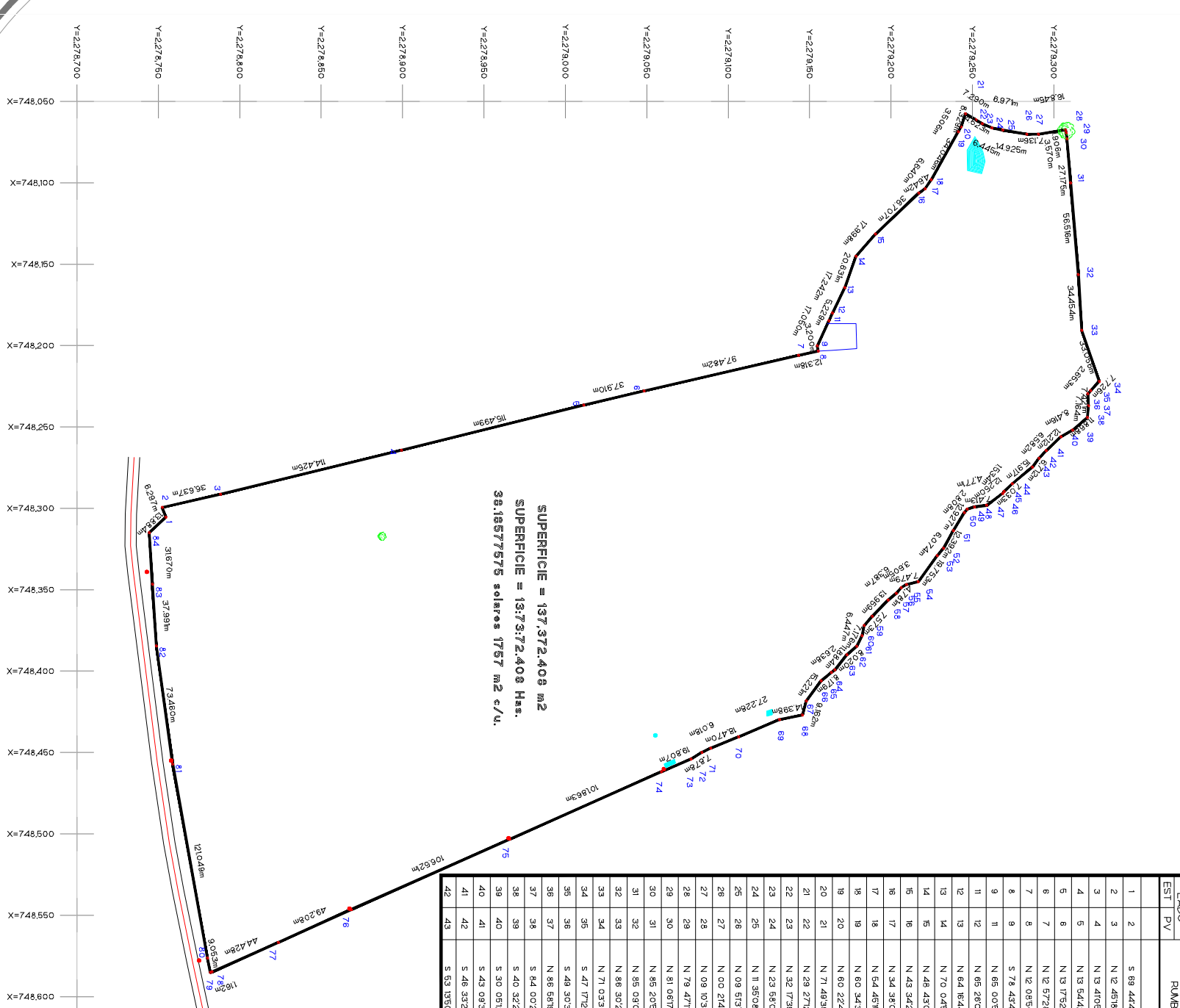


**CUADRO DE CONSTRUCCION**

LADO	PUNTO	RUMBO	DISTANCIA	COORDENADAS		
				V	X	Y
1	2	S 69.442463° W	6.297	2.278,754,5340	748,305,3680	2.278,754,5340
2	3	N 12.4518,93° W	36.637	2.278,758,0870	748,291,3710	2.278,758,0870
3	4	N 13.4106,65° W	114.425	2.278,889,2840	748,264,3000	2.278,889,2840
4	5	N 13.54422,8° W	165.489	2.279,013,3750	748,236,5510	2.279,013,3750
5	6	N 13.1752,74° W	37.910	2.279,048,2890	748,227,8110	2.279,048,2890
6	7	N 12.5728,51° W	97.432	2.279,143,2890	748,205,6620	2.279,143,2890
7	8	N 12.0850,59° W	12.318	2.279,155,3110	748,203,3600	2.279,155,3110
8	9	S 78.4342,01° W	3.200	2.279,154,6895	748,200,2217	2.279,154,6895
9	11	N 65.0058,60° W	17.050	2.279,161,8770	748,184,7870	2.279,161,8770
10	12	N 65.2604,33° W	5.229	2.279,164,0810	748,180,0110	2.279,164,0810
11	13	N 64.1644,65° W	17.242	2.279,171,5440	748,164,4770	2.279,171,5440
12	14	N 70.0450,59° W	20.651	2.279,187,5730	748,145,8000	2.279,187,5730
13	15	N 48.4300,29° W	17.998	2.279,190,4480	748,131,6550	2.279,190,4480
14	16	N 43.3421,83° W	38.707	2.279,217,0420	748,106,5640	2.279,217,0420
15	17	N 34.3806,14° W	46.642	2.279,250,2810	748,030,8910	2.279,250,2810
16	18	N 54.4656,16° W	66.640	2.279,224,6930	748,028,1930	2.279,224,6930
17	19	N 60.5439,42° W	34.046	2.279,241,4180	748,068,5380	2.279,241,4180
18	20	N 60.2243,63° W	3.606	2.279,243,1510	748,068,4900	2.279,243,1510
19	21	N 71.4839,64° W	8.329	2.279,246,7488	748,057,5768	2.279,246,7488
20	22	N 29.2712,25° E	7.290	2.279,252,0960	748,081,1810	2.279,252,0960
21	23	N 32.1739,83° E	4.623	2.279,256,0040	748,086,6310	2.279,256,0040
22	24	N 23.6904,48° E	6.446	2.279,261,9930	748,098,2490	2.279,261,9930
23	25	N 22.9288,05° E	6.971	2.279,268,7220	748,087,6490	2.279,268,7220
24	26	N 09.5137,98° E	14.825	2.279,283,4270	748,070,2050	2.279,283,4270
25	27	N 09.0140,70° W	7.166	2.279,290,5639	748,070,1800	2.279,290,5639
26	28	N 09.3036,64° W	16.246	2.279,307,1920	748,087,4740	2.279,307,1920
27	29	N 79.4712,82° E	19.008	2.279,307,5300	748,089,3600	2.279,307,5300
28	30	N 81.0617,88° E	3.670	2.279,308,0620	748,070,8770	2.279,308,0620
29	31	N 85.2052,42° E	27.175	2.279,310,2480	748,098,9820	2.279,310,2480
30	32	N 85.0901,01° E	56.606	2.279,316,0840	748,166,2780	2.279,316,0840
31	33	N 88.3028,18° E	34.464	2.279,317,830	748,190,6980	2.279,317,830
32	34	N 71.0330,97° E	33.056	2.279,327,8930	748,219,3920	2.279,327,8930
33	35	S 47.172,62° E	7.726	2.279,332,6520	748,230,6270	2.279,332,6520
34	36	S 48.3031,61° E	2.653	2.279,330,9290	748,230,6270	2.279,330,9290
35	37	N 88.6819,92° E	7.421	2.279,321,9290	748,237,0380	2.279,321,9290
36	38	S 84.0024,84° E	7.164	2.279,320,5730	748,244,1830	2.279,320,5730
37	39	S 40.3235,93° E	116.88	2.279,316,540	748,251,870	2.279,316,540
38	40	S 30.0512,76° E	8.118	2.279,304,2720	748,260,0860	2.279,304,2720
39	41	S 43.0930,17° E	12.212	2.279,295,3840	748,264,4490	2.279,295,3840
40	42	S 48.3323,69° E	6.582	2.279,290,8390	748,268,2280	2.279,290,8390
41	43	S 53.1950,97° E	6.712	2.279,288,8200	748,274,6050	2.279,288,8200
42	43	S 53.1950,97° E	6.712	2.279,288,8200	748,274,6050	2.279,288,8200

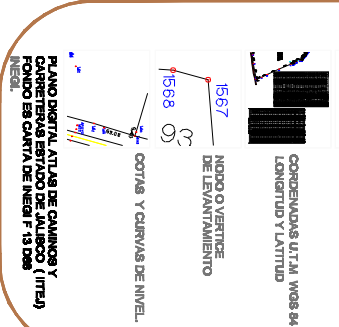
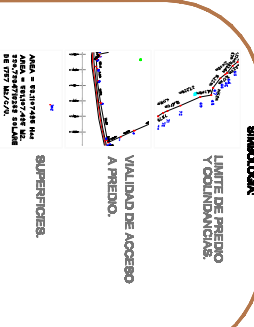
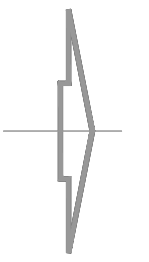
**SUPERFICIE = 137.372.408 m2**  
**SUPERFICIE = 13.737.2408 Ha.**  
**38.18577575 solares 1757 m2 c/u.**



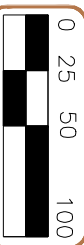
43	44	S 38.4042,75° E	15.917	2.279,274,15700	748,254,7650	2.279,274,15700
44	45	S 43.5010,56° E	7.033	2.279,269,4970	748,288,6390	2.279,269,4970
45	46	S 50.6224,70° E	15.34	2.279,268,5290	748,290,8290	2.279,268,5290
46	47	S 38.4510,88° E	12.250	2.279,258,7140	748,298,9590	2.279,258,7140
47	48	S 08.5000,43° E	7.413	2.279,261,9540	748,291,0410	2.279,261,9540
48	49	S 17.6940,04° E	4.771	2.279,246,880	748,300,560	2.279,246,880
49	50	S 47.2856,32° E	2.808	2.279,244,1980	748,302,5850	2.279,244,1980
50	51	S 68.3838,04° E	12.927	2.279,238,1950	748,318,9200	2.279,238,1950
51	52	S 61.1019,81° E	12.992	2.279,232,2100	748,324,4760	2.279,232,2100
52	53	S 49.6253,86° E	6.074	2.279,228,2980	748,329,1210	2.279,228,2980
53	54	S 54.0224,01° E	19.753	2.279,218,8980	748,346,1110	2.279,218,8980
54	55	S 12.5824,13° E	7.479	2.279,209,4100	748,348,7900	2.279,209,4100
55	56	S 31.1805,05° E	3.605	2.279,208,3300	748,348,6840	2.279,208,3300
56	57	S 48.2127,01° E	4.781	2.279,203,1630	748,352,2370	2.279,203,1630
57	58	S 40.0223,95° E	6.847	2.279,198,2690	748,356,3460	2.279,198,2690
58	59	S 45.2010,57° E	13.869	2.279,185,4500	748,366,2740	2.279,185,4500
59	60	S 48.3848,15° E	7.573	2.279,183,4430	748,371,9560	2.279,183,4430
60	61	S 79.0804,98° E	6.447	2.279,182,2240	748,378,270	2.279,182,2240
61	62	S 63.2252,98° E	7.776	2.279,179,0390	748,384,7020	2.279,179,0390
62	63	S 40.3846,46° E	8.020	2.279,176,2940	748,389,9260	2.279,176,2940
63	64	S 51.2420,52° E	118.84	2.279,165,910	748,398,2440	2.279,165,910
64	65	S 38.2741,91° E	2.638	2.279,163,3980	748,400,7820	2.279,163,3980
65	66	S 38.2841,47° E	8.779	2.279,157,0760	748,405,9820	2.279,157,0760
66	67	S 53.3209,24° E	16.221	2.279,148,0300	748,418,2230	2.279,148,0300
67	68	S 74.0930,78° E	9.182	2.279,145,6290	748,427,0370	2.279,145,6290
68	69	S 11.6530,33° E	14.398	2.279,131,4060	748,429,8480	2.279,131,4060
69	70	S 22.5848,10° E	27.228	2.279,106,3240	748,440,4780	2.279,106,3240
70	71	S 21.9109,64° E	18.470	2.279,091,9980	748,447,3530	2.279,091,9980
71	72	S 26.4435,92° E	6.018	2.279,083,7770	748,448,9970	2.279,083,7770
72	73	S 31.9598,91° E	7.878	2.279,077,0810	748,454,1340	2.279,077,0810
73	74	S 22.6536,59° E	19.807	2.279,068,4480	748,461,9500	2.279,068,4480
74	75	S 24.0726,78° E	101.683	2.279,989,9100	748,503,3200	2.279,989,9100
75	76	S 23.6330,56° E	106.621	2.279,888,4170	748,516,4800	2.279,888,4170
76	77	S 24.2405,25° E	48.208	2.279,823,6050	748,566,710	2.279,823,6050
77	78	S 23.6927,79° E	44.428	2.279,723,9940	748,584,8090	2.279,723,9940
78	79	S 19.6204,78° E	118.2	2.279,721,8100	748,595,2030	2.279,721,8100
79	80	S 78.6332,62° W	9.053	2.279,718,0050	748,576,3200	2.279,718,0050
80	81	S 79.6008,26° W	121.049	2.279,758,7940	748,467,1710	2.279,758,7940
81	82	S 82.0704,28° W	73.480	2.279,748,2000	748,344,0350	2.279,748,2000
82	83	S 88.1814,41° W	37.991	2.279,748,2710	748,346,4930	2.279,748,2710
83	84	S 88.3838,22° W	3167.0	2.279,744,4170	748,314,8770	2.279,744,4170
84	1	N 43.1932,10° W	13.884	2.279,754,5340	748,305,3680	2.279,754,5340

**SUPERFICIE = 137.372.408 m2**

**PLAN PARCIAL DE DESARROLLO URBANO "SANTA RITA"**



**"SANTA RITA"**  
 PROYECTADO SR. ALFREDO VAZQUEZ HERNANDEZ Y CDA.  
 TITULAR DEL LOTE SR. HERNANDEZ Y CDA.  
 PLAN DE LEVANTAMIENTO TOPOGRAFICO PLANIMETRIA DEL PREDIO.  
 D-4  
 PROYECTADO POR: TOP. ISMAEL ALVAREZ S.  
 FECHA: 1:3.000  
 PERITADO POR: ANO. FELIPE ALVAREZ E.  
 FECHA: NOVENA  
 DIBUJADO POR: TOP. ISMAEL ALVAREZ S.  
 FECHA: NOVENA



BOCADOROS PARA NIVELAR EN EL CENTRO, JALISCO.MX

ESCALA 1:3.500